


Honeypot Ant Word Find

F L U L L C U R N W E B K C K Y C C
Q A Q P N D A N A D O G N Y D Y X O
U R V U O E B U D D S R G E I P B L
E V D P C S D G E E U T K V C U X O
E A R A T E O P C F R L H E C T C N
N F O D U R M H R R O G T O R O A Y
O Z N C R T E E O J J R R Z R P M R
B V E C N C N A P A N T A O X A D Y
O D H G A H Z D A E R J U G U B X Z
D T V V L H O N E Y P O T P E N J O
D A T V I F G S A N Q C Z N U B D H
Q C B R B K R E P L E T E R X H J S

Find the hidden words in the puzzle.

Words can be found 

ABDOMEN

ADULT

ANT

COLONY

CROP

DESERT

DRONE

EGG

FORAGE

HEAD

HONEYPOT

LARVA

NECTAR

NOCTURNAL

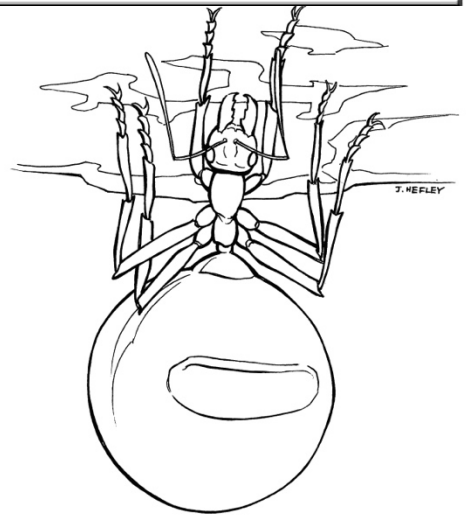
PUPA

QUEEN REPLETE

THORAX

UNDERGROUND

WORKER



IOWA STATE UNIVERSITY™

Insect Zoo