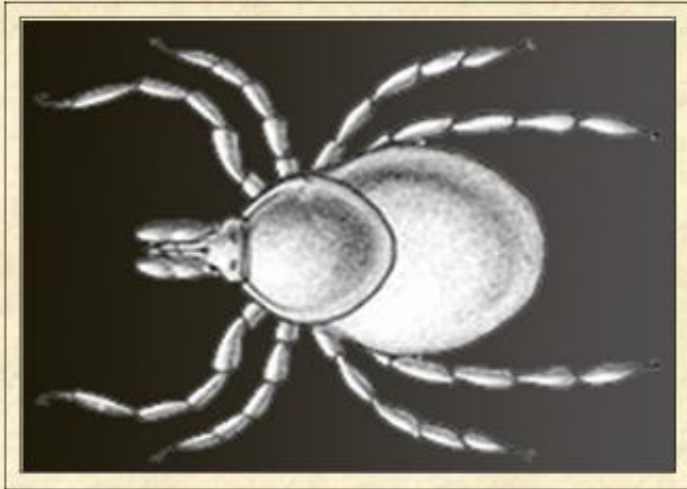


# WANTED

For transmitting the bacteria that cause Lyme Disease



The deer tick:  
*Ixodes scapularis*

## Protect yourself!

When you are outdoors in tick-infested areas:

- Wear long pants and use a repellent
- Check yourself and your pets for ticks frequently

Contact your doctor if you suspect Lyme disease

- Early symptoms may include a red rash near the bite site, headache or fever

## Help us to Protect Iowans!

Entomologists at Iowa State University want to find out where these ticks are, and if they are carrying Lyme disease bacteria.

If you find ANY tick, wrap it in tissue, add a small drop of water and seal it in a zip-top plastic bag. Mail this to:

Department of Entomology  
Lyme Disease Project  
436 Science II  
Iowa State University  
Ames, IA 50011-3222

Please provide your name and information about your tick encounter including, for example: where you found the tick (geographic location, on yourself or a pet), and whether or not it was attached. We'll send you a postcard in return, telling you what species of tick you found.